



Code: UKCAL-CWF-CON-EIA-RPT-00007-7E30

Volume 7E Proposed Development (Onshore) Appendices

Appendix 5-3 Terrestrial Archaeology and Cultural Heritage Visualisations

Caledonia Offshore Wind Farm Ltd

5th Floor Atria One, 144 Morrison Street, Edinburgh, EH38EX

Volume 7E Appendix 5-3 Terrestrial Archaeology and Cultural Heritage Visualisations

Code	UKCAL-CWF-CON-EIA-RPT-00007-7E30
Revision	Issued
Date	18 October 2024

Table of Contents

1	Terrestrial Archaeology and Cultural Heritage Visualisations.....	1
---	---	---

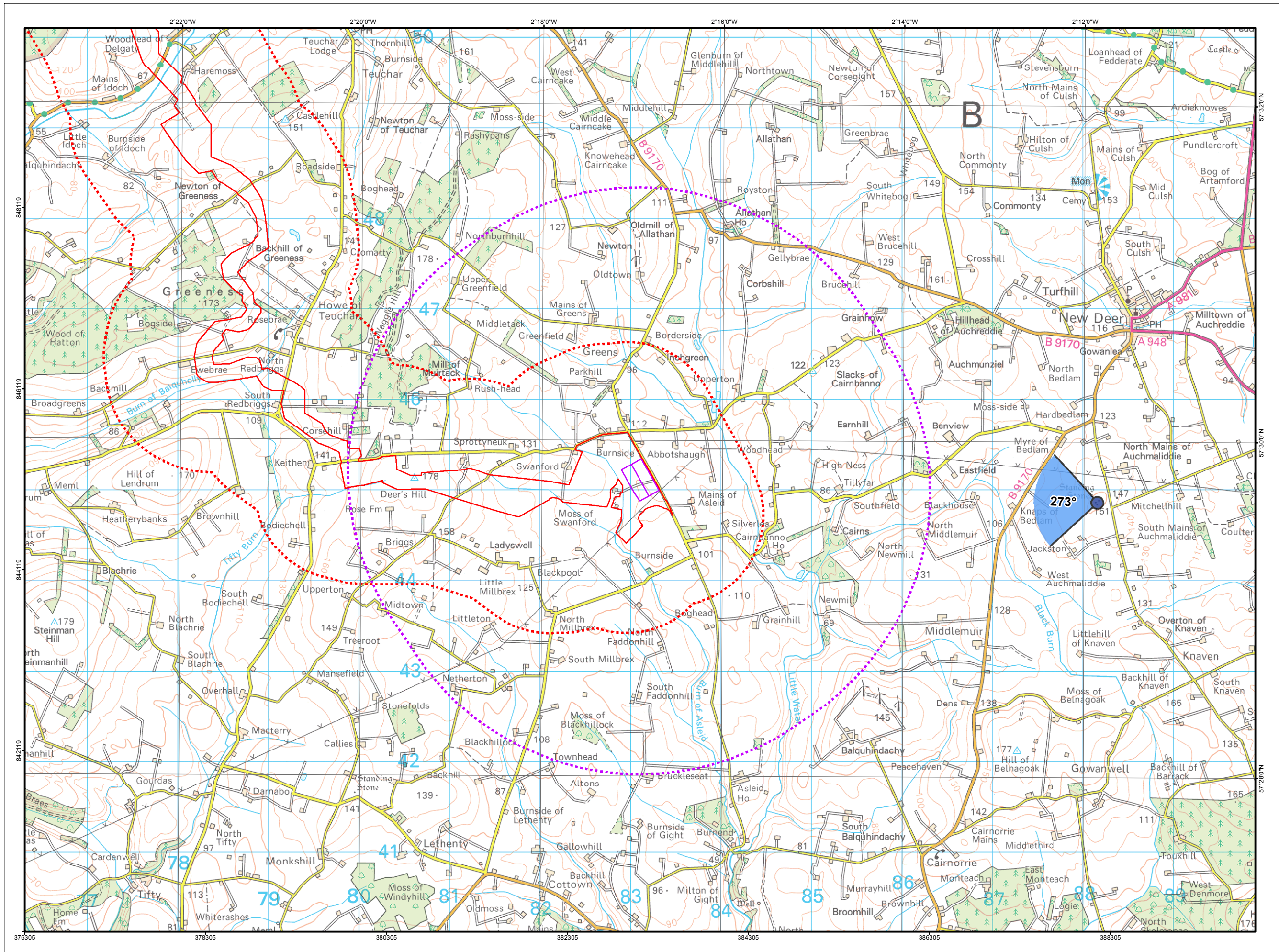
List of Figures

Figure 5-1a: Viewpoint CH1 North Mains of Auchmaliddie stone circle (Listing number SM9392)

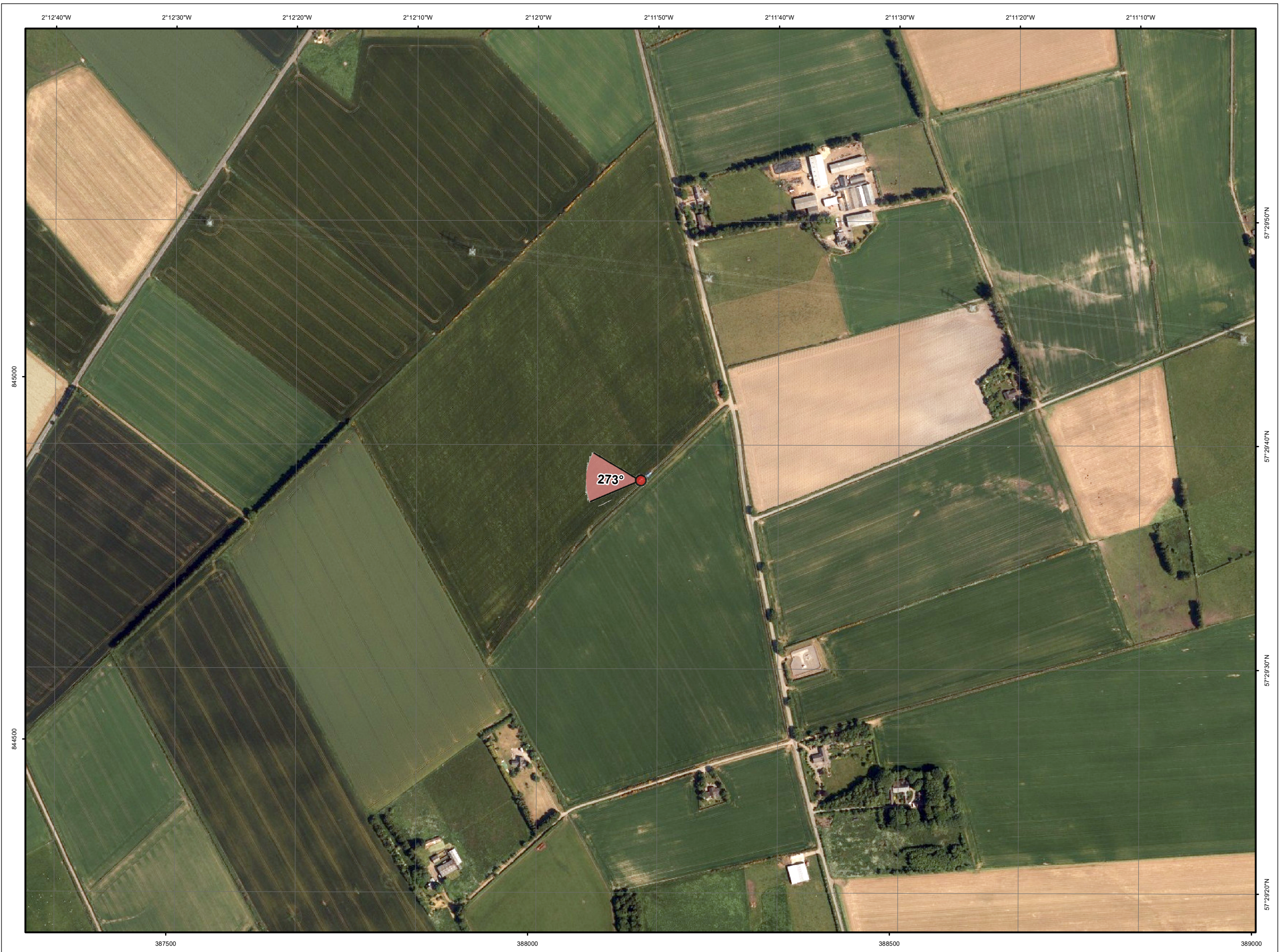
Figure: 5-1b: Viewpoint CH1 North Mains of Auchmaliddie stone circle (Listing number SM9392)

Figure: 5-1c: Viewpoint CH1 North Mains of Auchmaliddie stone circle (Listing number SM9392)

1 Terrestrial Archaeology and Cultural Heritage Visualisations



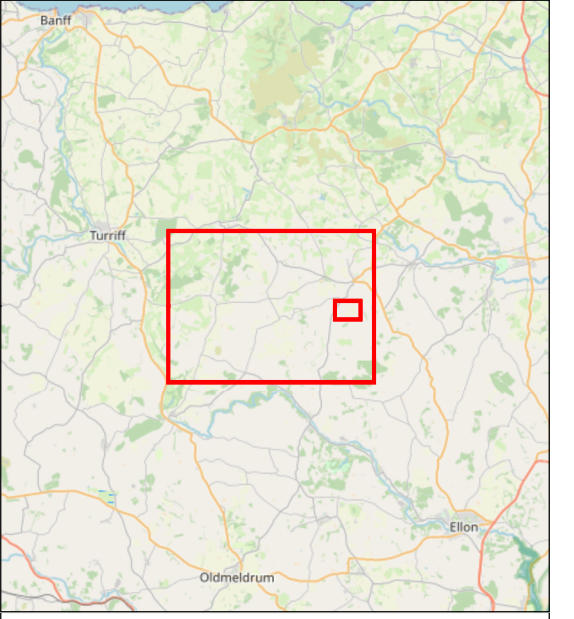
90 Degree View
Scale: 1:40,000



53.5 Degree View
Scale: 1:5,000

- Onshore Transmission Infrastructure
- Red Line Boundary
- Onshore Substations
- ⋯ Onshore Export Cable Corridor 1km Study Area
- ⋯ Substation 3km Study
- ◡ 90 Degree Field of View
- ◡ 53.5 Degree Field of View

© Crown copyright and database rights (2024) Ordnance Survey 0100031673.
Service Layer Credits: © OpenStreetMap (and) contributors, CC-BY-SA
© Caledonia Offshore Wind Farm Ltd © 2023. This document is the property of contractors and sub-contractors and shall not be reproduced nor transmitted without prior written approval.

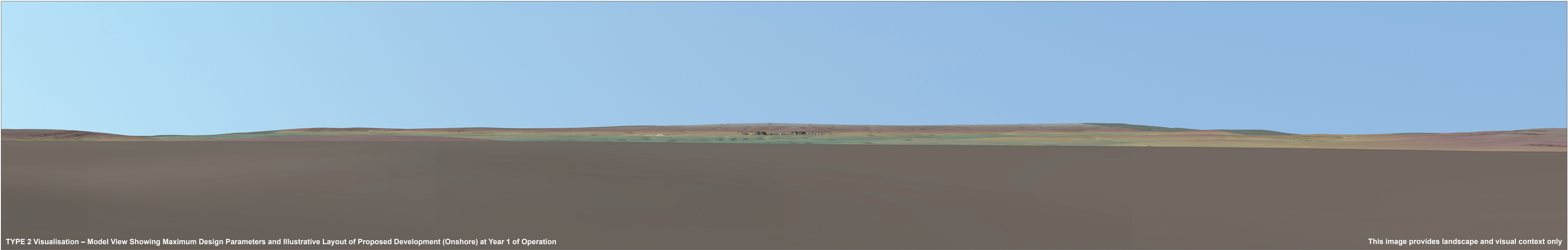


REV	DATE	DOC STATUS	ORIGIN	REVIEW	APP.
03	06/09/2024	Approved	RA	LT	EC
02	21/08/2024	For Review	RA	LT	EC
01	14/05/2024	For Review	RA	LT	EC



CONTRACTOR DRAWING NO: UKCAL1_OPN_WNF_ENV_LVA_MAP_00020_03
 GEODETIC PARAMETERS: OSGB36 / British National Grid (EPSG:27700)
 DRAWING TITLE: Figure 5-1a
 Viewpoint 1:
 North Mains of Auchmaliddie Stone Circle
 (Listing Number SM9392)

STATUS	SCALE
Approved	
DRAWING NUMBER: N/A	SHEET NO: 01 of 02 REV: N/A



TYPE 2 Visualisation – Model View Showing Maximum Design Parameters and Illustrative Layout of Proposed Development (Onshore) at Year 1 of Operation

This image provides landscape and visual context only

OS reference: 388156 E 844857 N
Eye level: 151.8 m AOD
Direction of view: 273°
Distance to site: 4846 m

Horizontal field of view: 90° (cylindrical projection)
Principal distance: 522 mm
Paper size: 841 x 297 mm (half A1)
Correct printed image size: 820 x 130 mm

Camera: Canon EOS 6D Mark II
Lens: Canon EF 50mm f/1.4
Camera height: 1.5 m
Date and time: N/A

Viewpoint CH1: North Mains of Auchmaliddie stone circle (Listing number SM9392)

Figure: 5-1b



TYPE 2 Visualisation – Model View Showing Maximum Design Parameters and Illustrative Layout of Proposed Development (Onshore) at Year 1 of Operation

View flat at a comfortable arm's length

OS reference: 388156 E 844857 N	Horizontal field of view: 53.5° (planar projection)	Camera: Canon EOS 6D Mark II
Eye level: 151.8 m AOD	Principal distance: 812.5 mm	Lens: Canon EF 50mm f/1.4
Direction of view: 273°	Paper size: 841 x 297 mm (half A1)	Camera height: 1.5 m
Distance to site: 4846 m	Correct printed image size: 820 x 260 mm	Date and time: N/A

Figure: 5-1c
Viewpoint CH1: North Mains of Auchmaliddie stone circle (Listing number SM9392)
Caledonia Offshore Wind Farm
© Crown copyright. All rights reserved (2024). Licence number 0100031673

Caledonia Offshore Wind Farm
5th Floor, Atria One
144 Morrison Street
Edinburgh
EH3 8EX

www.caledoniaoffshorewind.com

